

DISCOVER LANCASTER *pennsylvania*



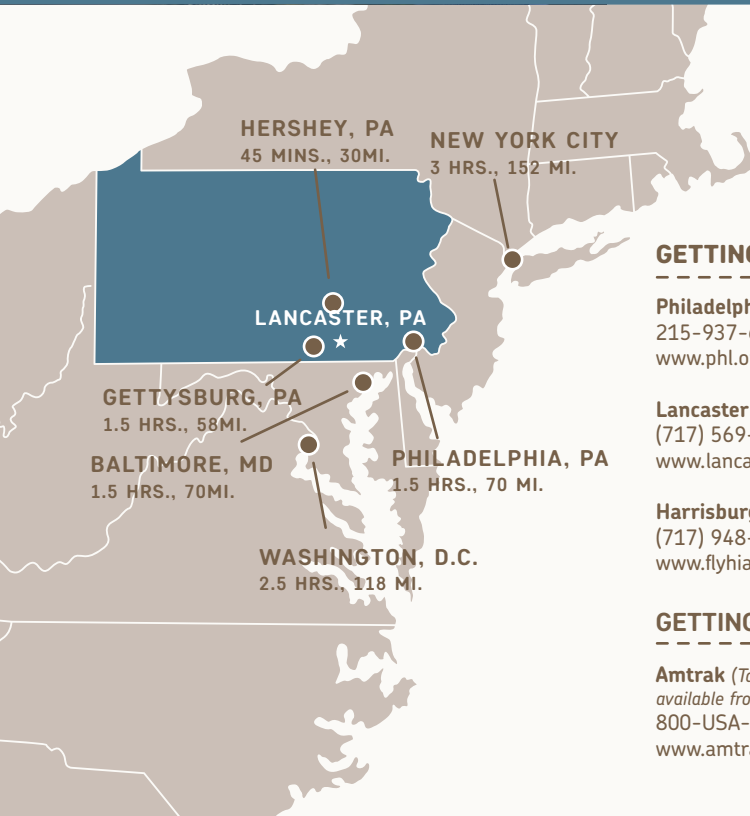
DISCOVER
Lancaster





GETTING HERE

It's easy to get to Lancaster by plane and train, so no matter where you are coming from, you won't have a hard time finding us. You can fly directly into Philadelphia International Airport (PHL), Harrisburg International Airport (MDT), or Lancaster Airport (LNS) and we are a short train, taxi or rental car ride away. Other nearby airports include BWI, Dulles, JFK, and Newark. When you arrive, ask about renting a car or cab at the airport or train station. The Lancaster Amtrak station is conveniently located near our vibrant downtown and offers frequent connections to Philadelphia and New York City.



GETTING HERE BY AIR

Philadelphia International Airport
215-937-6937
www.phl.org

Lancaster Airport (LNS)
(717) 569-1221
www.lancasterairport.com

Harrisburg International Airport
(717) 948-3900 or (888) 442-5387
www.flyhia.com

GETTING HERE BY TRAIN

Amtrak (Taxis and rental cars are available from Lancaster Station.)
800-USA-RAIL
www.amtrak.com



Contents

3	VISITORS CENTERS
4	48 HOURS IN LANCASTER
6	DINING
8	TOWNS & VILLAGES
9	NEARBY CITIES
12	ATTRACTIONS
15	MAP

VISITORS CENTERS

Stop at one of our two Visitors Centers to get information on the region, plus recommendations, maps, and more from our knowledgeable staff.

DISCOVER LANCASTER VISITORS CENTER

501 Greenfield Road
Lancaster, PA 17601

DOWNTOWN VISITORS CENTER

38 Penn Square
Lancaster, PA 17603

DISCOVER LANCASTER

IN 48 HOURS

Start your day on the farm learning about the oldest and one of the largest settlements of the Amish in the United States. Interactive experiences at one of our interpretive attractions provide an authentic and respectful look into their interesting way of life. Your knowledgeable guide will explain the history, customs, clothing, and culture of the Amish. Some properties offer multilingual guides. View the surrounding farmlands throughout the county with a guided tour or you can even catch a buggy ride!

Indulge in a hearty lunch of Pennsylvania Dutch-style cuisine favorites including Chicken Corn Soup, Brown Buttered Noodles, Red Beet Eggs, Ham Balls... but don't forget to leave room for a slice of Shoofly Pie and a Whoopie Pie (or two)! There are several restaurants that will welcome you with open arms and warm plates, whether traveling with just your family or a whole bus group! You can taste the tradition and love in every bite.

Now it's time to indulge in some retail therapy. Enjoy everything from bargain outlet shopping at name-brand stores to window shopping locally-owned boutiques to Amish-owned businesses like quilt shops, bakeries, and farm

stands. Our small towns and villages throughout the county each offer themselves as a unique destination with their own charm and local flavor: try exploring Lititz, Adamstown, Manheim, or Strasburg (to name a few!). Spend your evening on the edge of your (comfortable) seat taking in a Broadway-caliber show at one of our spectacular theatres. Productions range from stories from the Bible brought to life, dinner theatres, performances in historic venues, awe-inspiring illusions, and celebrity concerts.

Wake up refreshed and ready for another day of discovery. Visit a local farmers market; **Lancaster Central Market**, the oldest continuously-operating farmers market in the United States, is a must! While you're there, stroll the streets of downtown Lancaster for art galleries and boutique shopping. The walkable city boasts more than 50 restaurants, many independently owned and offering international flavors and cuisine.

Continue the day with a walking tour in one of our small towns, a visit to one of our museums addressing topics from watches to art to a former President's home, or even roll your own pretzel at the country's first commercial pretzel bakery. Take a relaxing

ride through Amish countryside on America's oldest short-line railroad. There's so much history and culture throughout Lancaster County for you to discover!

No matter what time of year you visit, there is a wide assortment of options to include on your itinerary. We are thankful for the

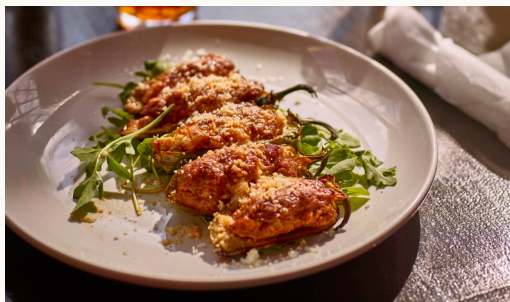
diversity of visitors we receive to Lancaster County each year and we welcome each one. Lancaster County businesses are open and ready to host you for a memorable and enjoyable stay in Central Pennsylvania.



DELICIOUS DINING IN LANCASTER

You're in for a treat when you dine at one of Lancaster County's many restaurants. Select mouth-watering dishes from eclectic menus, often featuring local, fresh ingredients. Many restaurant menus change as the seasons do to feature locally-sourced goods and produce. A meal in Lancaster means fresh, flavorful, and unique dishes.

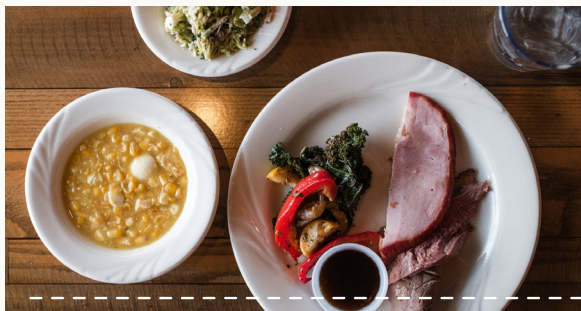
A must-visit in Lancaster County, no matter how long your stay, is one of our many smorgasbords or buffets. These restaurants often feature the stick-to-your-ribs, meat & potatoes meals we are most known for. Pennsylvania Dutch-style fare that many return for during each visit to Lancaster County can be found piled high on plates at these dining outlets. A visit to Lancaster County isn't complete without a hearty meal of authentic Pennsylvania Dutch cooking.



Our downtown is known for the variety of international cuisine available at many locally-owned restaurants. Try new or familiar flavors from eateries featuring African, American, Asian, French, Greek, Indian, Irish, Italian, Latin, and Nepalese cuisines...just to name a few! Breakfast to dinner and drinks to dessert, you're sure to find a flavor you love downtown. This is the best place to eat as the locals do!

Lancaster County is well caffeinated with plenty of café and coffeehouse options throughout

the county. These quick-service style cafes can be found on the main streets of many of our small towns and villages. They are a great way to sneak in a quick bite to eat, learn more about the community in which they are located, and get some great local advice on “must-do’s” from the employees!



MUST TRY LANCASTER EATS & SWEETS

Whoopie Pies

An iconic dessert made from two cake-like cookies with sweet cream in the center.

Shoofly Pie

A staple of Pennsylvania Dutch dessert – a molasses crumb cake that comes in two styles: “wet bottom” which has a gooey bottom layer or “dry bottom” which is more cake-like.

Pretzels

*They started as a sign of simple, nourishing foods from our German and European history, but have become a cultural food icon for the county. Enjoy a warm soft pretzel freshly baked or a crunchy snack pretzel. Did you know the first commercial pretzel bakery in the United States is located in Lititz? Be sure to visit **Julius Sturgis Pretzel Bakery** during your visit!*

Chicken Pot Pie

If you’re in Lancaster County, forget the crust! Our version is a hearty stew-like meal with broth, slow-cooked chicken, carrots, potatoes, and savory square noodles.

Sweet Bologna

Sweet & smoky beef-based sausage usually enjoyed paired with mustard as a snack or on a sandwich; reflects the traditions of our Western Europe heritage.

Chow Chow

Combination of pickled vegetables (usually the odds & ends left at the end of harvest) that make a sweet & sour side dish. Chow Chow traditionally includes carrots, onions, cauliflower, celery, corn, peppers, and beans for a colorful mix!

Wilbur Buds

Chocolate morsels that debuted in Lititz in 1893, and have been a favorite ever since. These sweet “buds” are still made in Central Pennsylvania today!

Ice Cream

What better way to use farm fresh milk? There are a variety of ice cream shops throughout the county, many featuring homemade flavors!



TOWNS & VILLAGES

IN LANCASTER

ADAMSTOWN

Nestled in the countryside of northeastern Lancaster County, “Antiques Capital, USA” is recognized as the premier year-round antiques destination in Northeast America.

LITITZ

Known today for its tree-lined streets and eclectic architecture, Lititz was first settled in the 1720s by Pennsylvania Germans, but was established in 1749 by Moravians. Lititz remains known for history, however the picturesque town is also a favorite spot for local art galleries, chic boutiques, antique shops, inns and cozy cafes.



ROUTE 30 CORRIDOR

There's a few-mile stretch of road in Lancaster County that the locals refer to as "Route 30." This corridor is packed with hotels, restaurants, shops, and attractions. Famously known for the **Tanger Outlet Center** and the **Amish Farm & House**, this stretch is a hub of activity and a convenient place to stay if you want to be close to the action! The Discover Lancaster Visitors Center is also conveniently located just off Route 30... be sure to come visit us!

DOWNTOWN LANCASTER

The city is situated in the center of Lancaster County, and its seven square miles are packed with art,

NEARBY CITIES

While you are here, take a short sightseeing trip from Lancaster County to explore some nearby cities. Tour awe-inspiring battlefields. Meander through historic mansions and museums. Take in some world-class theme parks, restaurants and shopping adventures. You'll discover why Pennsylvania memories last a lifetime. Some of our nearby neighbors include Hershey, Gettysburg, and Philadelphia. See drive times and distances on inside cover.

museums, historical attractions, restaurants and cafes, theatres, shops and boutiques.

BIRD-IN-HAND AND INTERCOURSE (ROUTE 340)

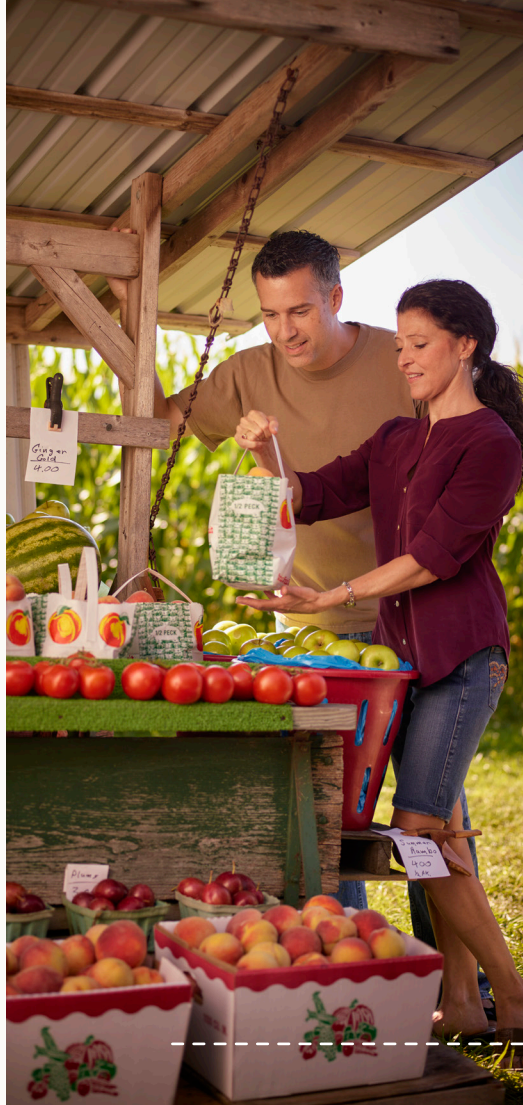
These towns are known for their picturesque sprawling countryside dotted with Amish farms. They offer the flavor of Pennsylvania Dutch culture and history via their restaurants, bakeries, quaint local shops

LANCASTER COUNTY IS HOME TO A PICTURESQUE LANDSCAPE THAT MUST BE WITNESSED.

and old-fashioned farmers' market. Route 340, which connects these two towns, is a AAA Cultural Scenic Byway. You'll pass lots of Amish horse & buggies and maybe even some using push scooters as you travel through these towns.

STRASBURG

This is the railroading epicenter of Lancaster County, with the **Strasburg Rail Road**



(the oldest short-line in the U.S.), the **Railroad Museum of Pennsylvania** (one of the top such museums in the world), the **Choo Choo Barn**, the **National**

Toy Train Museum, and **Paradise Station**. That's five awesome train venues, all within a mile or so of each other.

THESE TOWNS ARE A MIX OF THE OLD AND NEW, AND CONTAIN A VARIETY OF GALLERIES, SMALL SHOPS, MUSEUMS, AND EATERIES.





TOP ATTRACTIONS

AROUND LANCASTER

AMISH HOUSE TOURS & BUGGY RIDES:

- The Amish Experience
- The Amish Farm & House
- The Amish Village
- AAA Buggy Rides
- Aaron & Jessica's Buggy Rides
- Abe's Buggy Rides

NATIONAL WATCH & CLOCK MUSEUM:

Experience a fun journey through and about time at this museum dedicated to the history, science, and art of timekeeping and timekeepers, also called "horology". View world renowned Hamilton watches on display or visit the Hamilton Watch store in Downtown Lancaster.

KITCHEN KETTLE VILLAGE

Authentic PA Dutch shopping, homemade food, specialty shops, tours and activities.

SIGHT & SOUND THEATRES®

Exciting shows filled with laughter, action, adventure and Bible storytelling.

FULTON THEATRE

A National Historic Landmark and the oldest continuously-operating Opera House in the United States, brings unique, Broadway-caliber productions to their stage.

OUTDOOR ACTIVITIES:

From kayaking down the Susquehanna River and hiking up Chiques Rock to zip lining through the trees, there are plenty of outdoor activities to enjoy.

LANDIS VALLEY VILLAGE & FARM MUSEUM:

The largest PA Dutch living history farm & village in the country, interpreting German Heritage from 1740-1940.

EPHRATA CLOISTER

Tour this historic religious settlement established in 1732 to learn about the unique lifestyle of the community, the remarkable architecture, and their music.

WINERIES AND BREWERIES:

Enjoy more than 15 locally-operating breweries, wineries and distilleries for a taste of Lancaster’s spirits.

LANCASTER CENTRAL MARKET:

Enjoy shopping at America’s oldest farmers’ market, open year-round on Tuesdays, Fridays and Saturdays.

**FIND MORE
TO DO IN
LANCASTER**

Rich in history and always evolving, Lancaster County is a welcoming and diverse destination for visitors. The area offers Amish traditions, a thriving downtown, memorable family attractions, walkable small towns, outdoor recreation, and a wide variety of dining and lodging options.



SCAN HERE for more attractions in Lancaster.

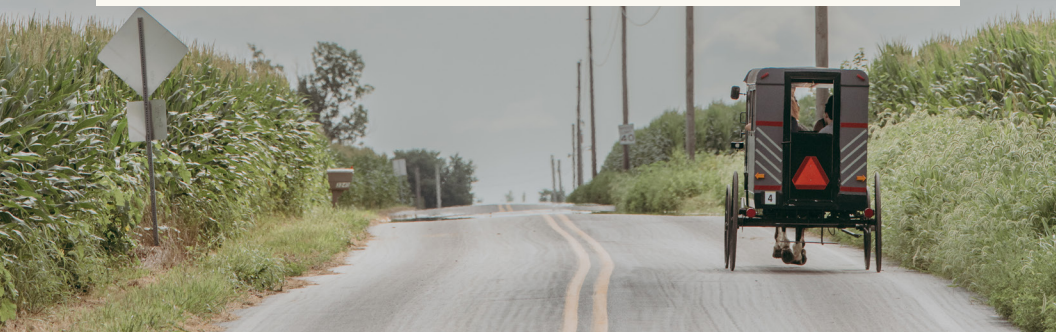


AMISH LIFESTYLE AND CULTURE

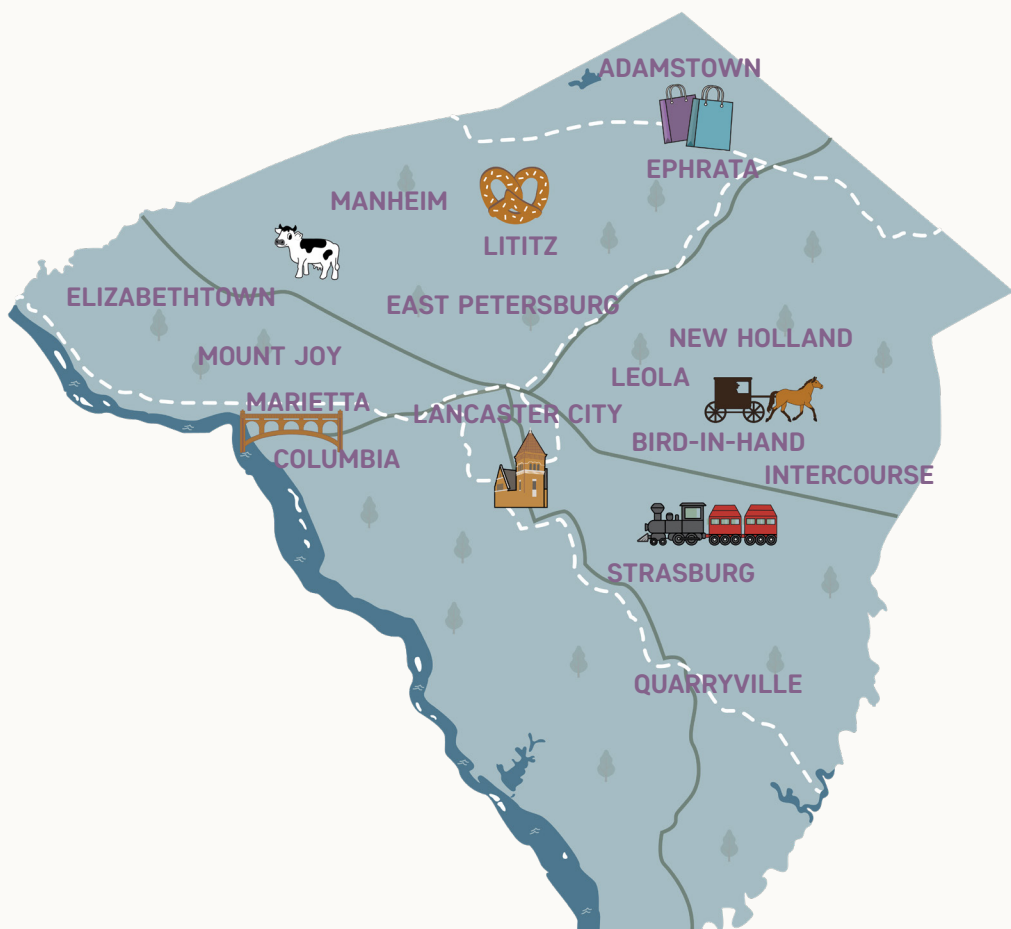
Lancaster, Pennsylvania is home to the oldest Amish settlement in the country. First arriving from Europe to escape religious persecution in the 1720's, the Amish population in Lancaster has rapidly grown to a population of more than 44,000. Plan your trip to Lancaster County and take a step back in time, not only observing but experiencing the lifestyle of the Amish.

FACTS ABOUT THE AMISH:

- Lifestyles of the Amish will vary between geographical location, however, all are largely based on an interpretation of the Bible as well as the ruling from their respective Ordnung.
- Generally, the Amish avoid the use of electricity. Many elements from mainstream society are considered to be tempting influences that could weaken their close-knit community.
- The simple attire of the Amish distinguishes them as a group and demonstrates many of their values, such as practicality, unity, and their faith. Men and women wear modest, solid-colored clothing that are fastened by pins or hook-and-eye closures.
- Humility is an important value to the Amish; one way this is demonstrated is through the abstinence of taking and displaying photos of themselves. This is seen as a violation of the command "Thou shalt not make unto thyself a graven image". Refraining from taking photos where their faces are recognizable is an important display of respect.
- Amish children learn English and High German in school. In their homes and within their community, they speak a dialect of German, Pennsylvania Deutsche.



MAP OF LANCASTER COUNTY



DRIVE TIME:

Intercourse to Elizabethtown: 45 minutes

Quarryville to Ephrata: 45 minutes

Lititz to Lancaster City: 25 minutes

Columbia to Lancaster City: 25 minutes

New Holland to Lancaster City: 30 minutes

Quarryville to Lancaster City: 30 minutes

**All times are approximate*

A brown horse with a blue halter is pulling a black carriage on a paved road. The background shows a green field and a single tree under a blue sky with clouds.

stay connected:

Whether you're seeking **personalized recommendations**, **travel advice**, or simply **looking to stay connected** with the vibrant Lancaster County community, we make it easy to do so through a variety of online channels.

Check out our website
[DiscoverLancaster.com](https://www.discoverlanaster.com)



You can follow our official accounts on platforms like **Facebook**, **YouTube**, **Pinterest**, **Instagram** and **TikTok**, where you can stay updated on local events, travel tips, and captivating images and videos of the county.

